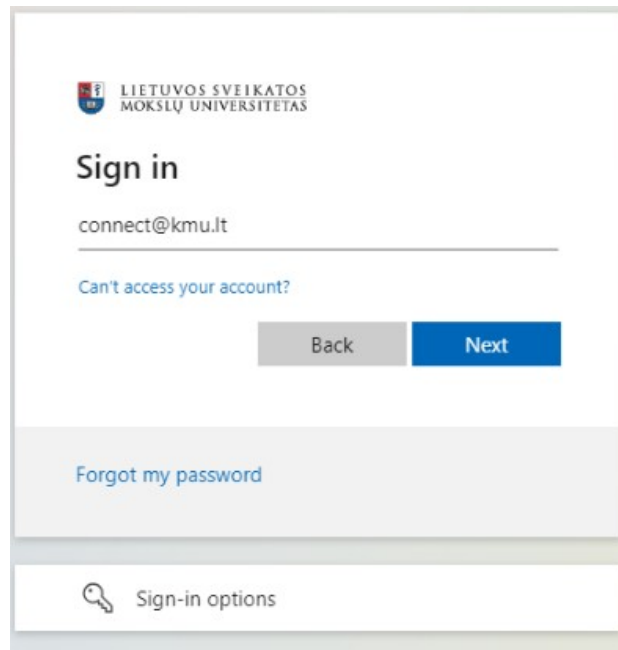


# LSMU VPN

Atsisiųskite reikiamus failus iš [ČIA](#), prisijungdami universitetinių vartotoju, ir sekite vaizdinę instrukciją.



LIETUVOS SVEIKATOS MOKSLŲ UNIVERSITETAS


## Sign in

connect@kmu.lt







[Can't access your account?](#)

[Back](#) [Next](#)

[Forgot my password](#)

 [Sign-in options](#)

Documents > General > VPN

 Name	Modified	Modified By
 LSMU-VPN.ovpn	8 minutes ago	Robertas Paul
    <b>openvpn-connect-3.3.7.2979_...</b>		Robertas Paul

- Preview
- Share
- Copy link
- Manage access
- Download**
- Automate >
- Copy to
- Version history
- Alert me
- More >

Documents > General > VPN


Name	Modified	Modified
LSMU-VPN.ovpn		oberta
openvpn-connect-3.3.7.2979_signed.msi		oberta

- Preview
- Share
- Copy link
- Manage access
- Download**
- Automate >
- Copy to
- Version history

This PC > Local Disk (C:) > Users > admin > Downloads

Name	Date modified
Today (2)	
openvpn-connect-3.3.7.2979_signed.msi	2023-06-16 14:09
LSMU-VPN.ovpn	2023-06-16 14:07

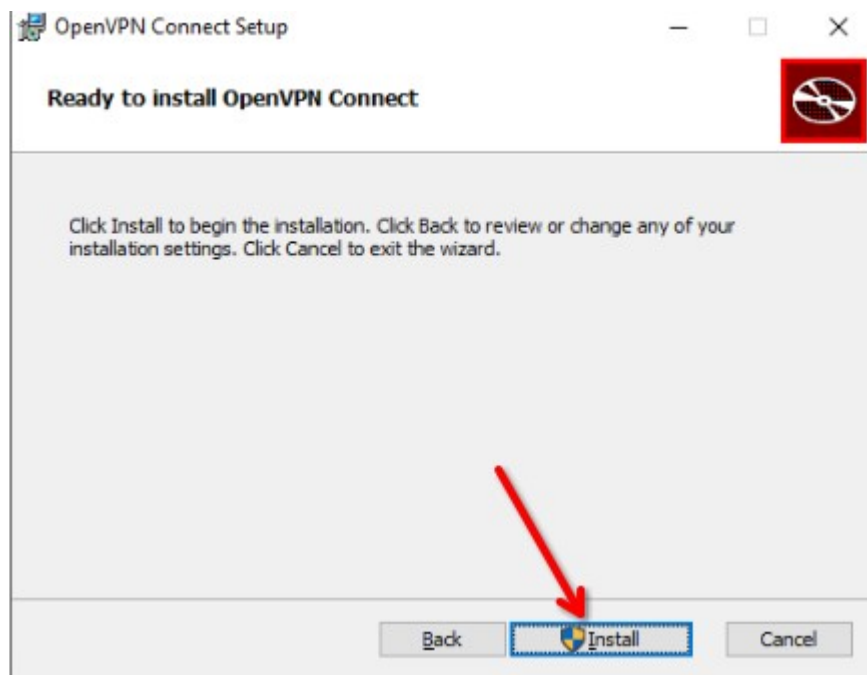
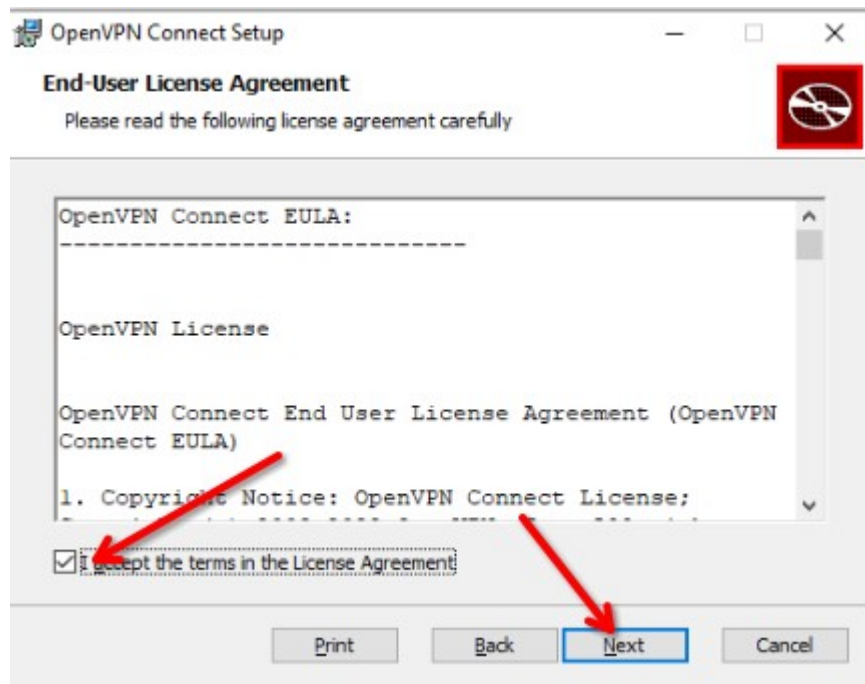
OpenVPN Connect Setup

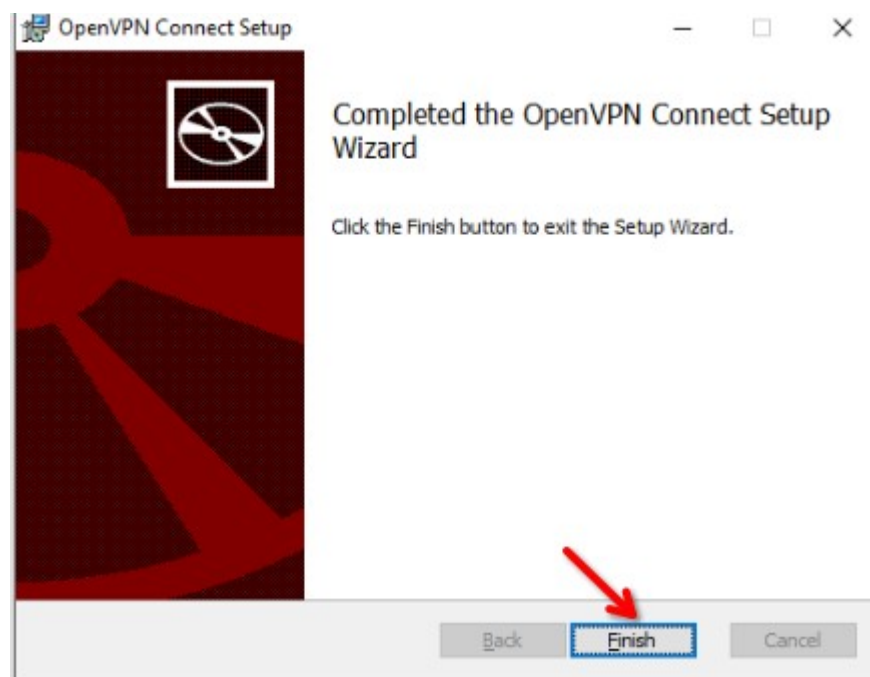
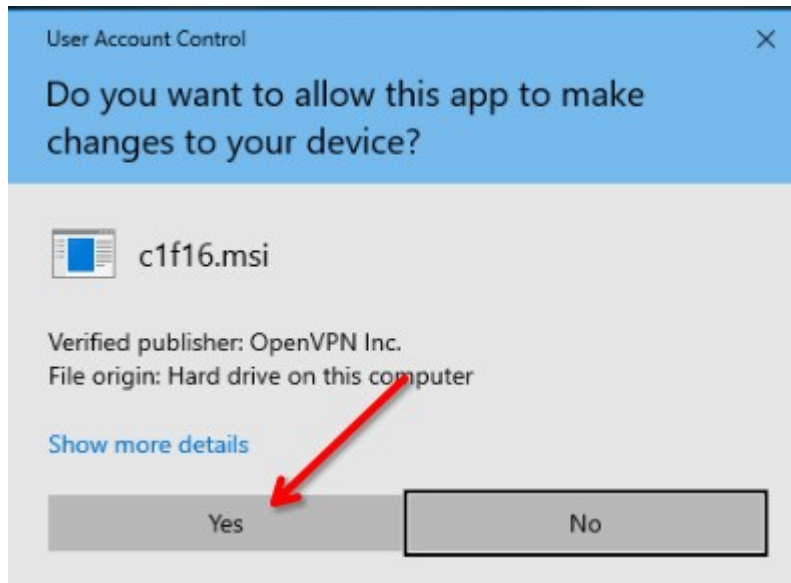


### Welcome to the OpenVPN Connect Setup Wizard

The Setup Wizard will install OpenVPN Connect on your computer. Click Next to continue or Cancel to exit the Setup Wizard.

Back Next Cancel





# How to Import VPN Profile from URL



**Import Profile**

URL FILE

URL  
https://openvpn.net

Please note that you can only import profile using URL if it is supported by your VPN provider

If your VPN provider supports import from URL, you can import a profile by entering server's URL or IP address



## OpenVPN Inc. Data Collection, Use And Retention

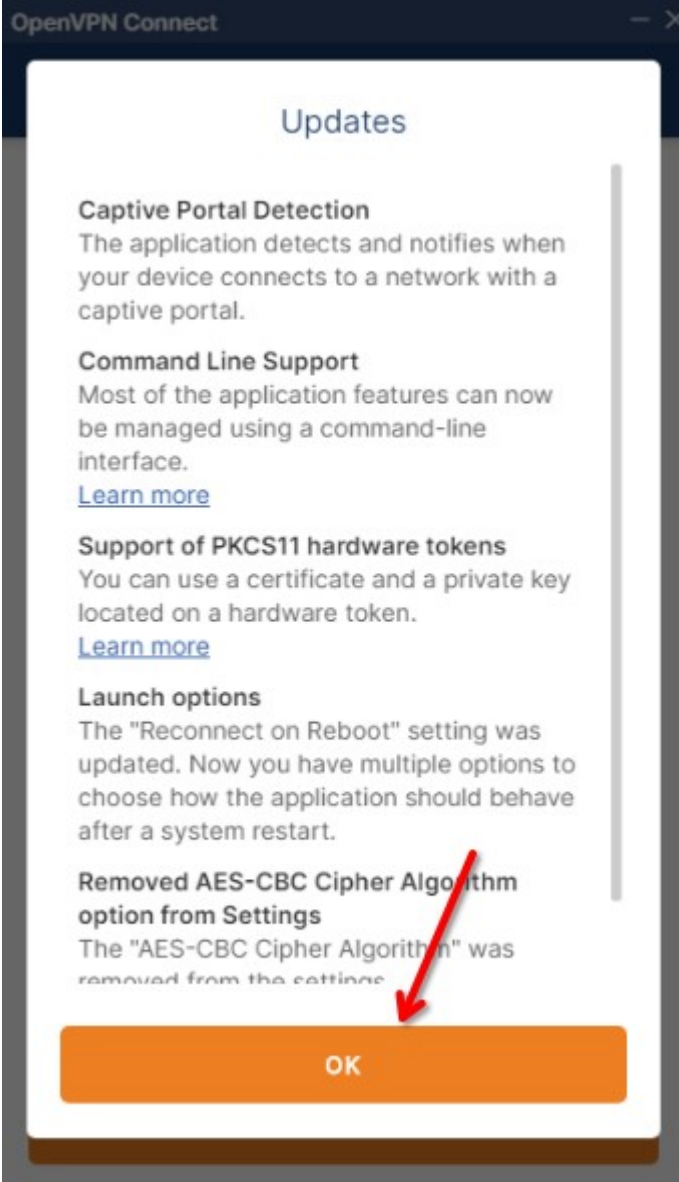
OpenVPN Inc. presents our updated policies to transparently show how we collect, use, or retain your data. By clearly and openly presenting the terms of our policies we hope to maintain the trust and confidence of all our valued customers. Our priority is to educate and make it easy for customers to understand what data we collect, why we collect it, and how we use it.

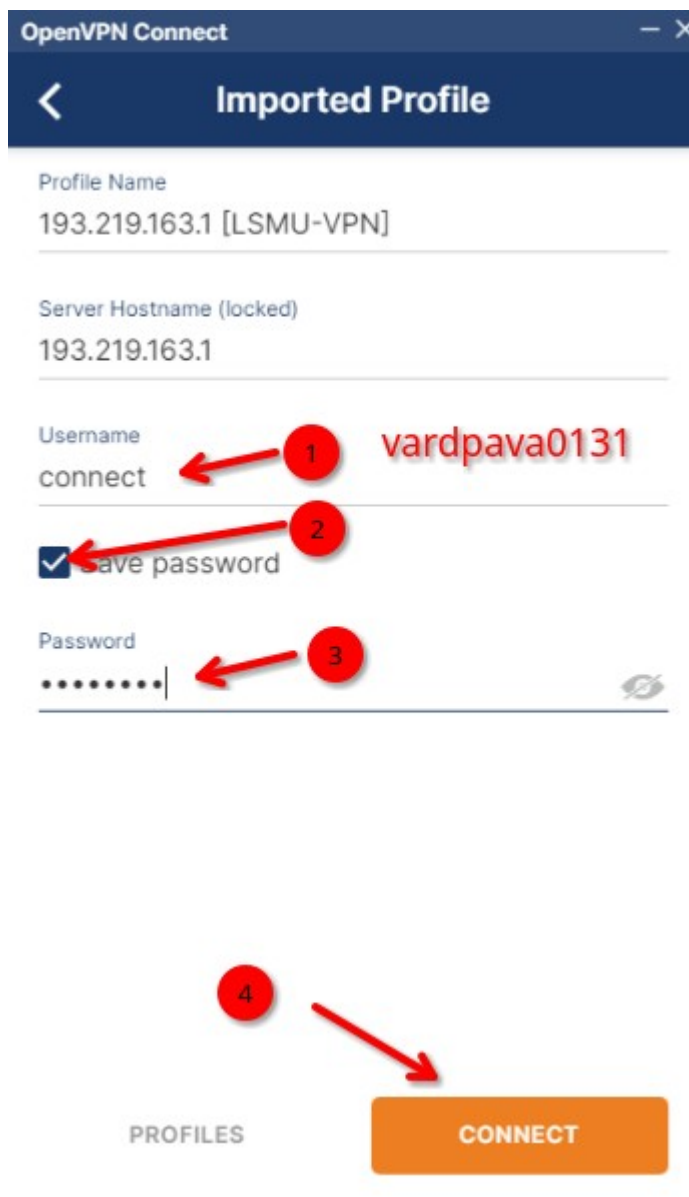
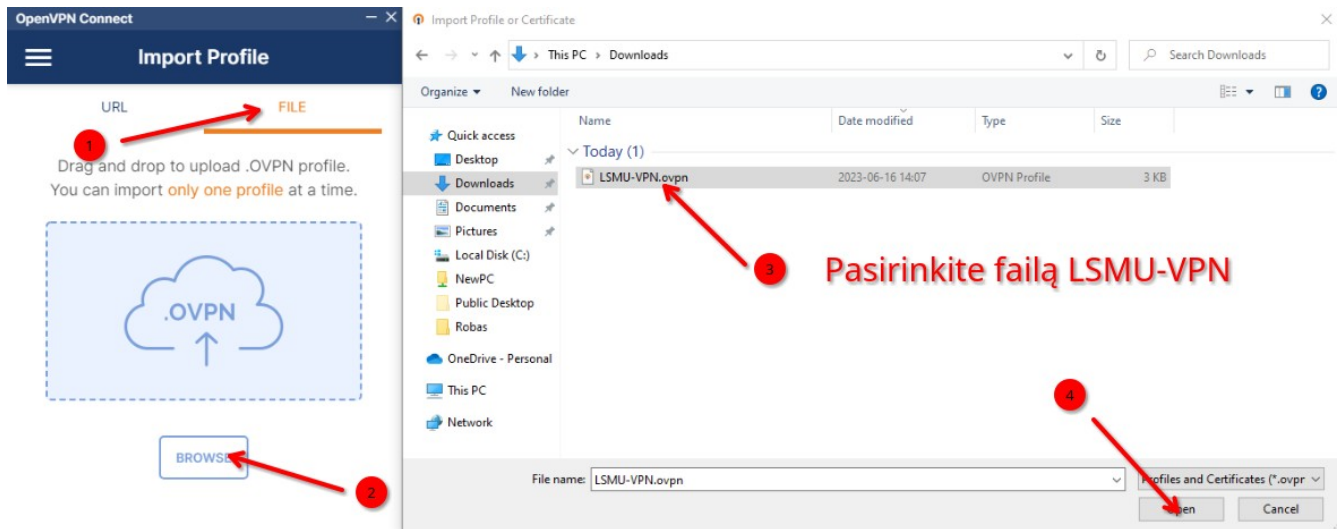
### APP DATA USAGE

OpenVPN Connect is used to create VPN tunnels that connect to Access Servers, Community OpenVPN Servers, and any other third-party service that works with the OpenVPN protocol. OpenVPN Inc. does not have control over these servers, and the data policy of each of these servers are



**AGREE**





OpenVPN Connect

Profiles

CONNECTED

OpenVPN Profile  
193.219.163.1 [LSMU-VPN]

CONNECTION STATS

4KB/s

0B/s

BYTES IN  
910 B/S

BYTES OUT  
1.28 KB/S

DURATION  
00:00:08

PACKET RECEIVED  
0 sec ago

YOU  
connect

